

Microsoft Access - a01h1traders_LastnameFirstname : Database (Access 2007)

Table Tools: Fields, Table

Filter: Ascending, Descending, Selection, Advanced, Refresh All, Delete, More

Records: New, Save, Spelling, Replace, Go To, Select

Text Formatting: Calibri, 11, Bold, Italic, Underline, Text Color, Background Color, Paragraph, Styles

All Access Objects: Tables (Categories, Customers, Employees, Order Details, Orders, Products, Shippers, Suppliers), Queries, Forms, Reports, Macros, Modules

Employee I	Last Nam	First Nam	Title	Title Of Courtesy	Birth Dat	Hire Dat	Address
1	Davolio	Nancy	Sales Representative	Ms.	12/8/1978	5/1/2012	507 - 20th Ave. E
2	Fuller	Andrew	Vice President, Sales	Dr.	2/19/1952	8/14/2012	908 W. Capital W
3	Leverling	Janet	Sales Representative	Ms.	8/30/1965	4/1/2009	722 Moss Bay Blv
4	Mast	Keith	Sales Representative	Mrs.	9/19/1981	5/3/2008	4110 Old Redmo
5	Buchanan	Steven	Sales Manager	Mr.	3/4/1965	10/17/2005	14 Garrett Hill
6	Suyama	Michael	Sales Representative	Mr.	7/2/1973	10/17/2006	Coventry House
7	King	Robert	Sales Representative	Mr.	5/29/1980	1/2/2005	Edgeham Hollow
8	Callahan	Laura	Inside Sales Coordinato	Ms.	1/9/1985	3/5/2011	4726 - 11th Ave.
9	Dodsworth	Anne	Sales Representative	Ms.	1/27/1983	11/15/2010	7 Houndstooth R
*	(New)						

Record: 4 of 9

Microsoft Access - a01h1traders_LastnameFirstname : Database (Access 2007)

Table Tools: Fields, Table

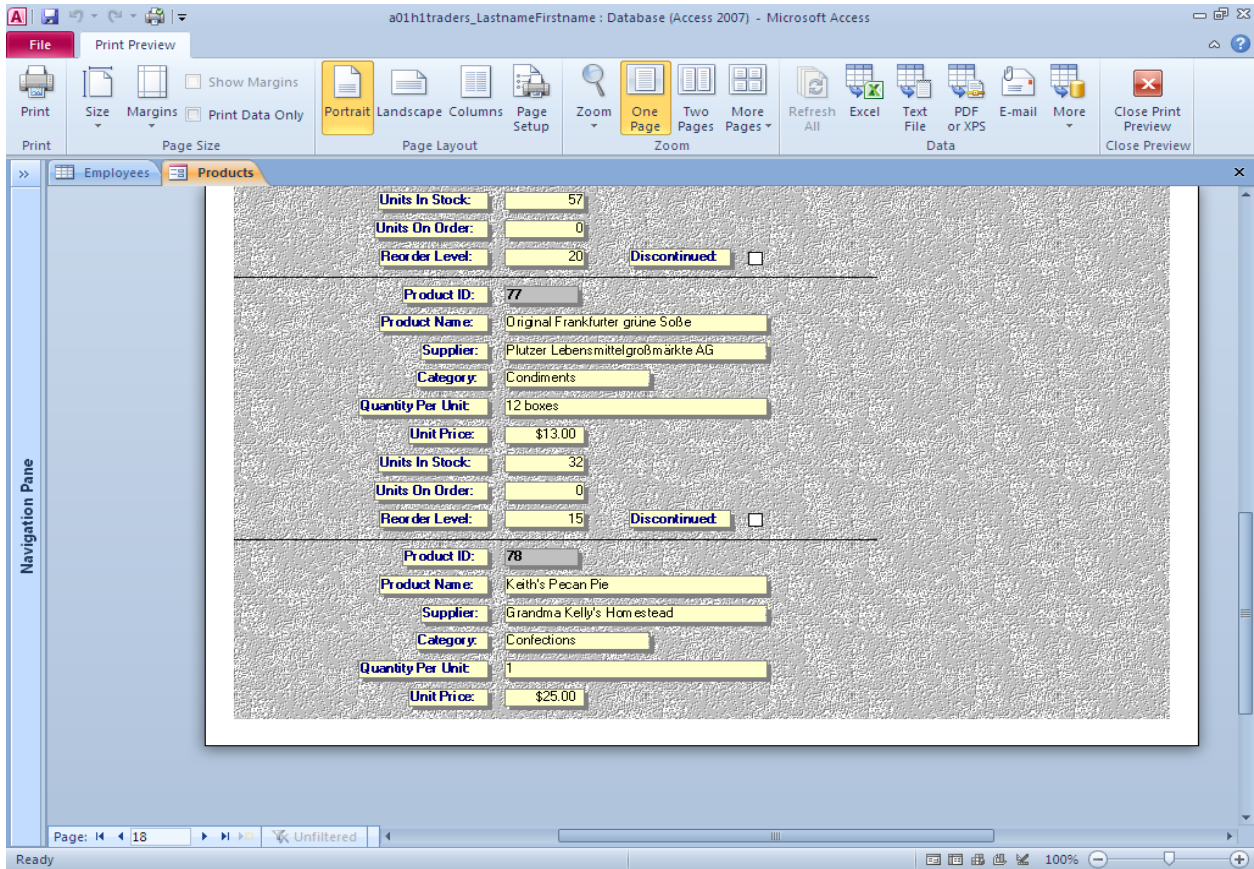
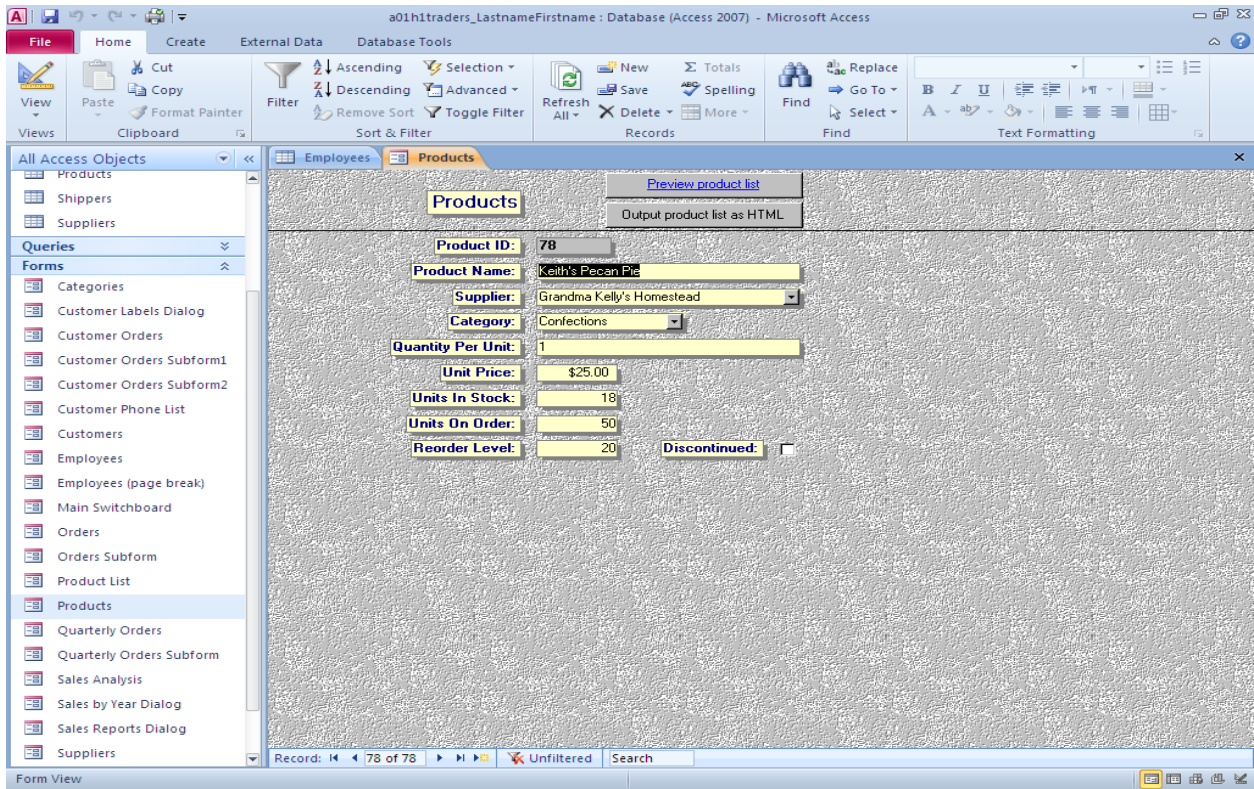
Filter: Ascending, Descending, Selection, Advanced, Refresh All, Delete, More

Records: New, Save, Spelling, Replace, Go To, Select

Text Formatting: Calibri, 11, Bold, Italic, Underline, Text Color, Background Color, Paragraph, Styles

All Access Objects: Tables (Categories, Customers, Employees, Order Details, Orders, Products, Shippers, Suppliers), Queries, Forms, Reports, Macros, Modules

Title	Title Of Courtesy	Birth Dat	Hire Dat	Address	City	Region	Postal C
Sales Representative	Ms.	12/8/1978	5/1/2012	507 - 20th Ave. E	Seattle	WA	98122
Vice President, Sales	Dr.	2/19/1952	8/14/2012	908 W. Capital Way	Tacoma	WA	98401
Sales Representative	Ms.	8/30/1965	4/1/2009	722 Moss Bay Blvd.	Kirkland	WA	98033
Sales Representative	Mrs.	9/19/1981	5/3/2008	4110 Old Redmond Rd.	Redmond	WA	98052
Sales Manager	Mr.	3/4/1965	10/17/2005	14 Garrett Hill	London	EU	SW1 8JR
Sales Representative	Mr.	7/2/1973	10/17/2006	Coventry House	London	EU	EC2 7JR
Sales Representative	Mr.	5/29/1980	1/2/2005	Edgeham Hollow	London	EU	RG1 9SP
Inside Sales Coordinato	Ms.	1/9/1985	3/5/2011	4726 - 11th Ave. N.E.	Seattle	WA	98105
Sales Representative	Ms.	1/27/1983	11/15/2010	7 Houndstooth Rd.	London	EU	WG2 7LT
*							



Microsoft Access interface showing the 'Products' table in a database named 'a01h1traders_LastnameFirstname : Database (Access 2007)'. The ribbon includes 'Table Tools' with 'Fields' and 'Table' tabs. The 'Products' table is displayed with columns: Product ID, Product Name, Supplier, Category, and Quantity Per Unit. The record for 'Keith's Pecan Pie' is highlighted.

Product ID	Product Name	Supplier	Category	Quantity Per Unit
58	Escargots de Bourgogne	Escargots Nouveaux	Seafood	24 pieces
59	Raclette Courdavault	Gai pâturage	Dairy Products	5 kg pkg.
60	Camembert Pierrot	Gai pâturage	Dairy Products	15 - 300 g round:
61	Sirop d'érable	Forêts d'érables	Condiments	24 - 500 ml bottl
62	Tarte au sucre	Forêts d'érables	Confections	48 pies
63	Vegie-spread	Pavlova, Ltd.	Condiments	15 - 625 g jars
64	Wimmers gute Semmelknödel	Plutzer Lebensmittelgroßmärkte AG	Grains/Cereals	20 bags x 4 piece
65	Louisiana Fiery Hot Pepper Sauce	New Orleans Cajun Delights	Condiments	32 - 8 oz bottles
66	Louisiana Hot Spiced Okra	New Orleans Cajun Delights	Condiments	24 - 8 oz jars
67	Laughing Lumberjack Lager	Bigfoot Breweries	Beverages	24 - 12 oz bottle
68	Scottish Longbreads	Specialty Biscuits, Ltd.	Confections	10 boxes x 8 pie
69	Gudbrandsdalsost	Norske Meierier	Dairy Products	10 kg pkg.
70	Outback Lager	Pavlova, Ltd.	Beverages	24 - 355 ml bottl
71	Fløtemysost	Norske Meierier	Dairy Products	10 - 500 g pkgs.
72	Mozzarella di Giovanni	Formaggi Fortini s.r.l.	Dairy Products	24 - 200 g pkgs.
73	Röd Kaviar	Svensk Sjöföda AB	Seafood	24 - 150 g jars
74	Longlife Tofu	Tokyo Traders	Produce	5 kg pkg.
75	Rhönbräu Klosterbier	Plutzer Lebensmittelgroßmärkte AG	Beverages	24 - 0.5 l bottles
76	Lakkalikööri	Karkki Oy	Beverages	500 ml
77	Original Frankfurter grüne Soße	Plutzer Lebensmittelgroßmärkte AG	Condiments	12 boxes
78	Keith's Pecan Pie	Grandma Kelly's Homestead	Confections	1
*	(New)			

Record: 78 of 78. No Filter. Search

Taskbar: Start | Revised Ann Sols and SC's | M01_GRAU2326_02_SE... | Microsoft Access - a... | exp2010_a01h1traders_a... | Microsoft Excel - exp2010... | 2:43 AM

Microsoft Access interface showing the 'Products' table. A dialog box is displayed with the following message:

Microsoft Access

The record cannot be deleted or changed because table 'Order Details' includes related records.

OK Help

Product Name	Supplier	Category	Quantity Per Unit	Unit Price
Chang	Exotic Liquids	Beverages	24 - 12 oz bottles	\$15
Aniseed Syrup	Exotic Liquids	Condiments	12 - 550 ml bottles	\$10
Chef Anton's Cajun Seasoning	New Orleans Cajun Delights	Condiments	48 - 6 oz jars	\$22
Chef Anton's Gumbo Mix	New Orleans Cajun Delights	Condiments	36 boxes	\$21
Grandma's Boysenberry Spread	Grandma Kelly's Homestead	Condiments	12 - 8 oz jars	\$25
Uncle Bob's Organic Dried Pears	Grandma Kelly's Homestead	Produce	12 - 1 lb pkgs.	\$30
Northwoods Cranberry Sauce	Grandma Kelly's Homestead	Condiments	12 - 12 oz jars	\$40
Mishi Kobe Niku	Tokyo Traders	Meat/Poultry	18 - 500 g pkgs.	\$97
Ikura	Tokyo Traders	Seafood	12 - 200 ml jars	\$31
Queso Pasa	Tokyo Traders	Seafood	1 kg pkg.	\$21
Seafood	Tokyo Traders	Seafood	10 - 500 g pkgs.	\$38
2 kg box	Tokyo Traders	Seafood	2 kg box	\$6
40 - 100 g pkgs.	Tokyo Traders	Seafood	40 - 100 g pkgs.	\$22
24 - 250 ml bottles	Tokyo Traders	Seafood	24 - 250 ml bottles	\$15
Pavlova	Pavlova, Ltd.	Confections	32 - 500 g boxes	\$17
Alice Mutton	Pavlova, Ltd.	Meat/Poultry	20 - 1 kg tins	\$35
Carnarvon Tigers	Pavlova, Ltd.	Seafood	16 kg pkg.	\$62
Teatime Chocolate Biscuits	Specialty Biscuits, Ltd.	Confections	10 boxes x 12 pieces	\$5
Sir Rodney's Marmalade	Specialty Biscuits, Ltd.	Confections	30 gift boxes	\$81
Sir Rodney's Scones	Specialty Biscuits, Ltd.	Confections	24 pkgs. x 4 pieces	\$10
Gustaf's Knäckebröd	PB Knäckebröd AB	Grains/Cereals	24 - 500 g pkgs.	\$21
Tunnbröd	PB Knäckebröd AB	Grains/Cereals	12 - 250 g pkgs.	\$5
Guaraná Fantástica	Refrescos Americanas LTDA	Beverages	12 - 355 ml cans	\$4
NuNuCa Nuß-Nougat-Creme	Heli Süßwaren GmbH & Co. KG	Confections	20 - 450 g glasses	\$14
Gumbär Gummibärchen	Heli Süßwaren GmbH & Co. KG	Confections	100 - 250 g bags	\$31
Schoggi Schokolade	Heli Süßwaren GmbH & Co. KG	Confections	100 - 100 g pieces	\$43
Rössle Sauerkraut	Plutzer Lebensmittelgroßmärkte AG	Produce	25 - 825 g cans	\$45

Record: 5 of 79

Microsoft Access interface showing the 'Information about a01h1traders_LastnameFirstname' dialog box.

Information about a01h1traders_LastnameFirstname
C:\Documents and Settings\Toughbook\Desktop\Exploring Work\Access\access_chapter_...

Share your database in a Web browser
You can publish your Access application to a server, so that others can use your application from any standards-compliant Web browser.

Define Relationships
Define how the data in tables are related, such as ID fields or name fields in different tables that should match.

Compact & Repair
Help prevent and correct database file problems by using Compact and Repair.

Analyze Database
View object dependencies and analyze performance and design of

[View and edit database properties](#)

