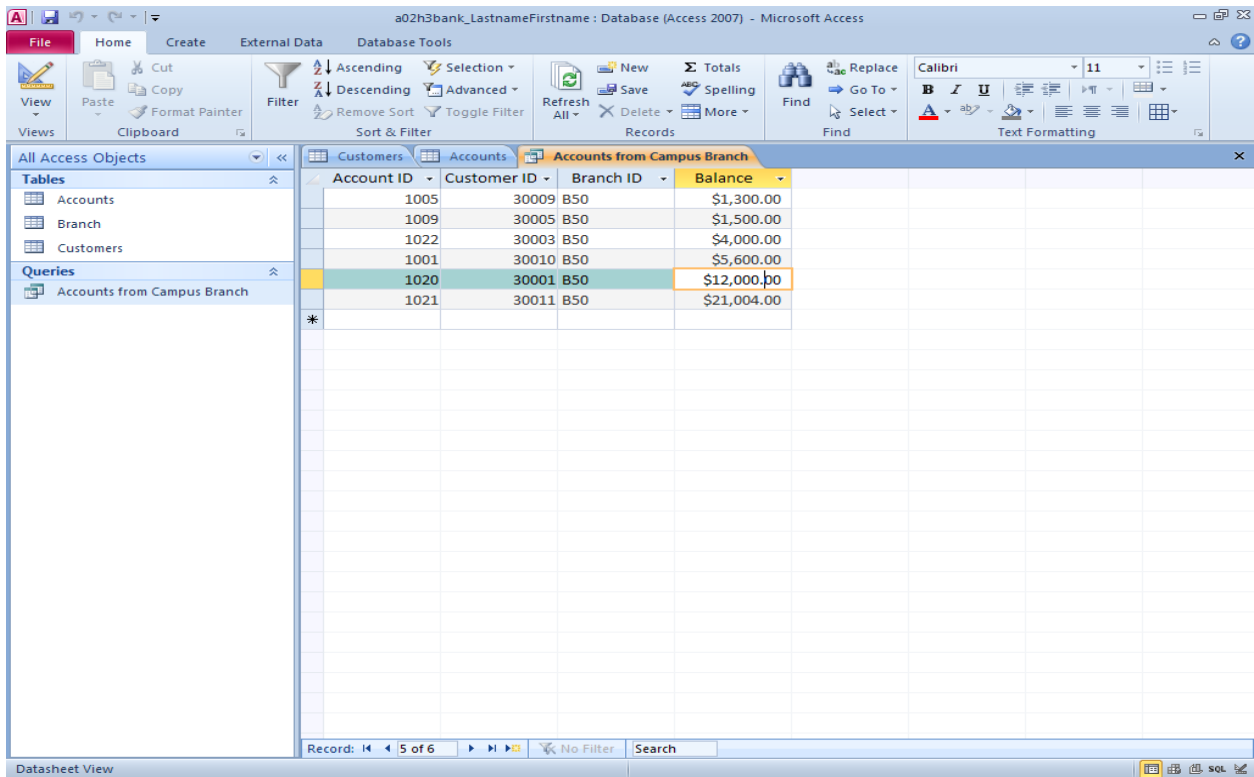
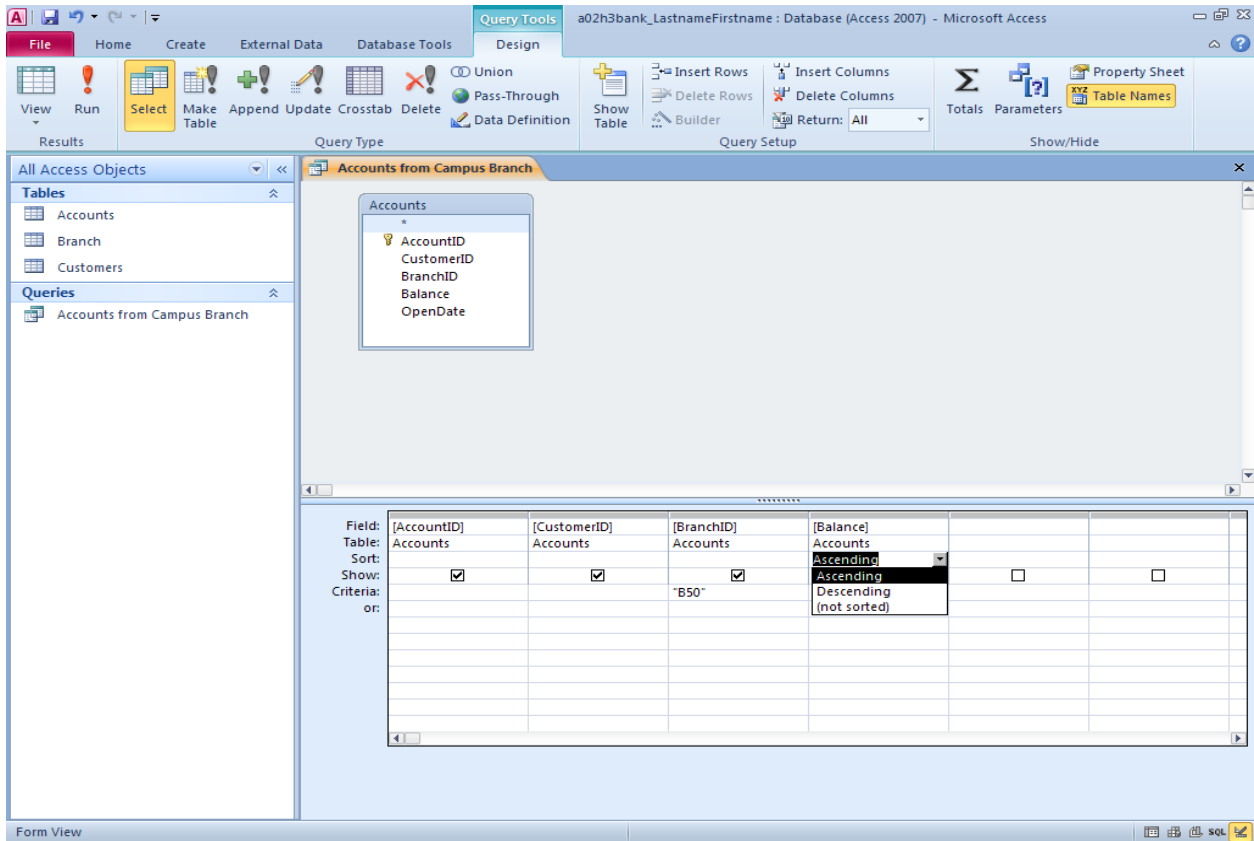


The screenshot shows the Microsoft Access interface with the Datasheet View of a query named 'Accounts from Campus Branch'. The table has four columns: Account ID, Customer ID, Branch ID, and Balance. The data is sorted by Account ID. The status bar at the bottom indicates 'Record: 1 of 22' and 'No Filter'.

Account ID	Customer ID	Branch ID	Balance
1001	30010	B50	\$5,600.00
1002	30001	B10	\$1,200.00
1003	30004	B20	\$15,490.00
1004	30003	B30	\$630.00
1005	30009	B50	\$1,300.00
1006	30003	B10	\$550.00
1007	30007	B20	\$1,620.00
1008	30004	B40	\$2,100.00
1009	30005	B50	\$1,500.00
1010	30001	B20	\$3,000.00
1011	30005	B10	\$290.00
1012	30002	B30	\$1,900.00
1013	30001	B20	\$10,000.00
1014	30009	B10	\$16,700.00
1015	30004	B30	\$460.00
1016	30001	B30	\$18,700.00
1017	30010	B30	\$980.00
1018	30005	B40	\$7,800.00
1019	30004	B30	\$14,250.00
1020	30001	B50	\$12,000.00
1021	30011	B50	\$21,004.00
1022	30003	B50	\$4,000.00
*			



Microsoft Access - a02h3bank_LastnameFirstname : Database (Access 2007) - Microsoft Access

Table Tools: Fields, Table

Customers Accounts

Account ID	Customer ID	Branch ID	Balance	OpenDate	Click to Add
1001	30010	B50	\$5,600.00	5/1/1995	
1002	30001	B10	\$1,200.00	4/14/2003	
1003	30004	B20	\$15,490.00	5/29/2002	
1004	30003	B30	\$630.00	9/21/2001	
1005	30009	B50	\$1,300.00	7/23/2003	
1006	30003	B10	\$550.00	7/3/2001	
1007	30007	B20	\$1,620.00	6/7/2004	
1008	30004	B40	\$2,100.00	9/30/2005	
1009	30005	B50	\$1,500.00	2/8/2004	
1010	30001	B20	\$3,000.00	3/18/2008	
1011	30005	B10	\$290.00	10/16/2000	
1012	30002	B30	\$1,900.00	3/14/2005	
1013	30001	B20	\$10,000.00	5/18/1997	
1014	30009	B10	\$16,700.00	9/20/1995	
1015	30004	B30	\$460.00	4/4/2001	
1016	30001	B30	\$18,700.00	3/13/2001	
1017	30010	B30	\$980.00	9/6/2002	
1018	30005	B40	\$7,800.00	5/9/1991	
1019	30004	B30	\$14,250.00	1/5/1999	
1020	30001	B50	\$12,000.00	4/14/2003	
1021	30011	B50	\$21,004.00	7/3/2007	
1022	30003	B50	\$4,000.00	4/13/2009	
1023	30011	B50	\$1,000.00	2/15/2011	
*					

Record: 23 of 23

Microsoft Access - a02h3bank_LastnameFirstname : Database (Access 2007) - Microsoft Access

Accounts from Campus Branch

Account ID	Customer ID	Branch ID	Balance
1023	30011	B50	\$1,000.00
1005	30009	B50	\$1,300.00
1009	30005	B50	\$1,500.00
1022	30003	B50	\$4,000.00
1001	30010	B50	\$5,600.00
1020	30001	B50	\$12,000.00
1021	30011	B50	\$21,004.00
*			

Record: 1 of 7

