

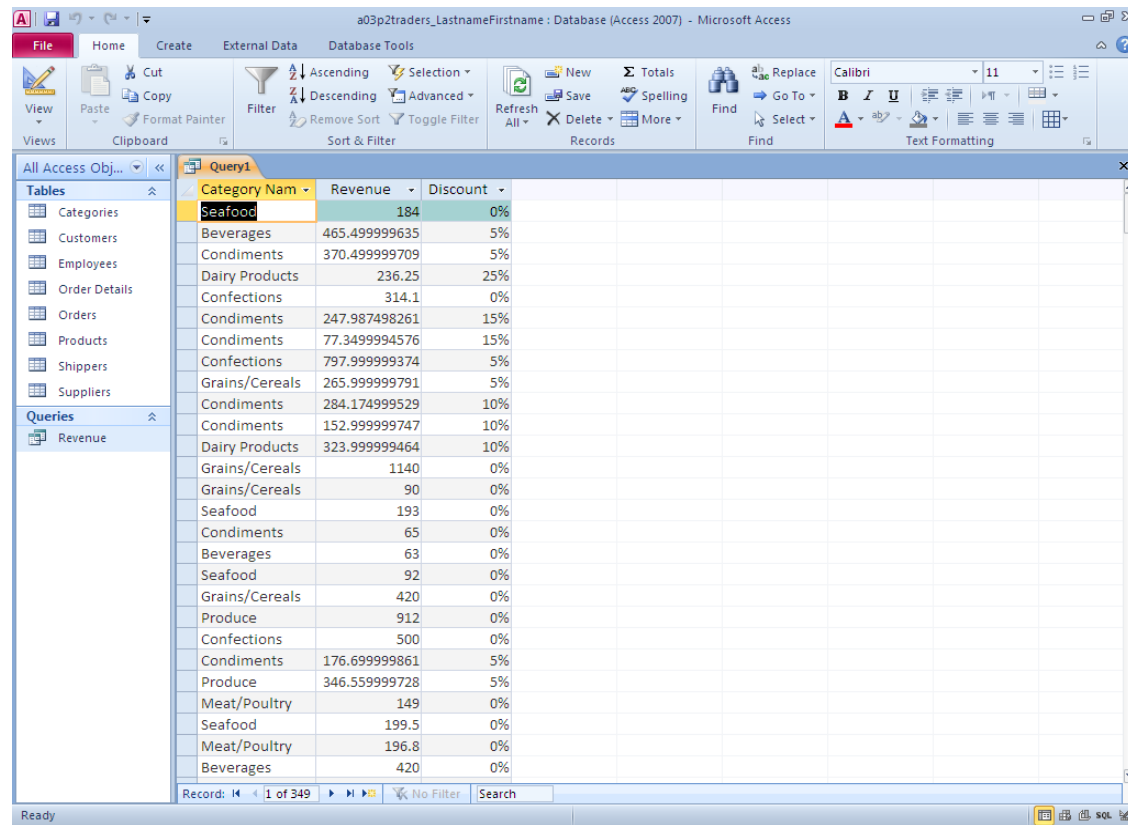
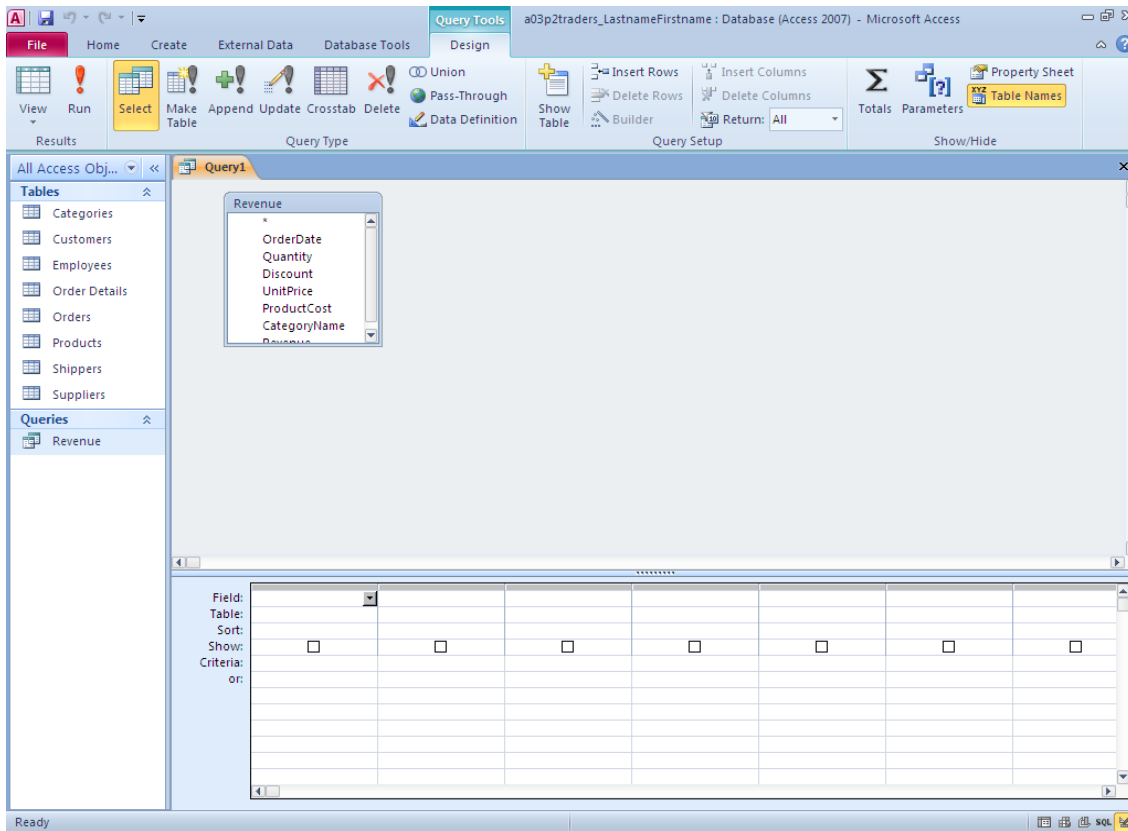
Field: OrderDate Quantity Discount UnitPrice ProductCost CategoryName Revenue: [UnitPrice]*[Quantity]

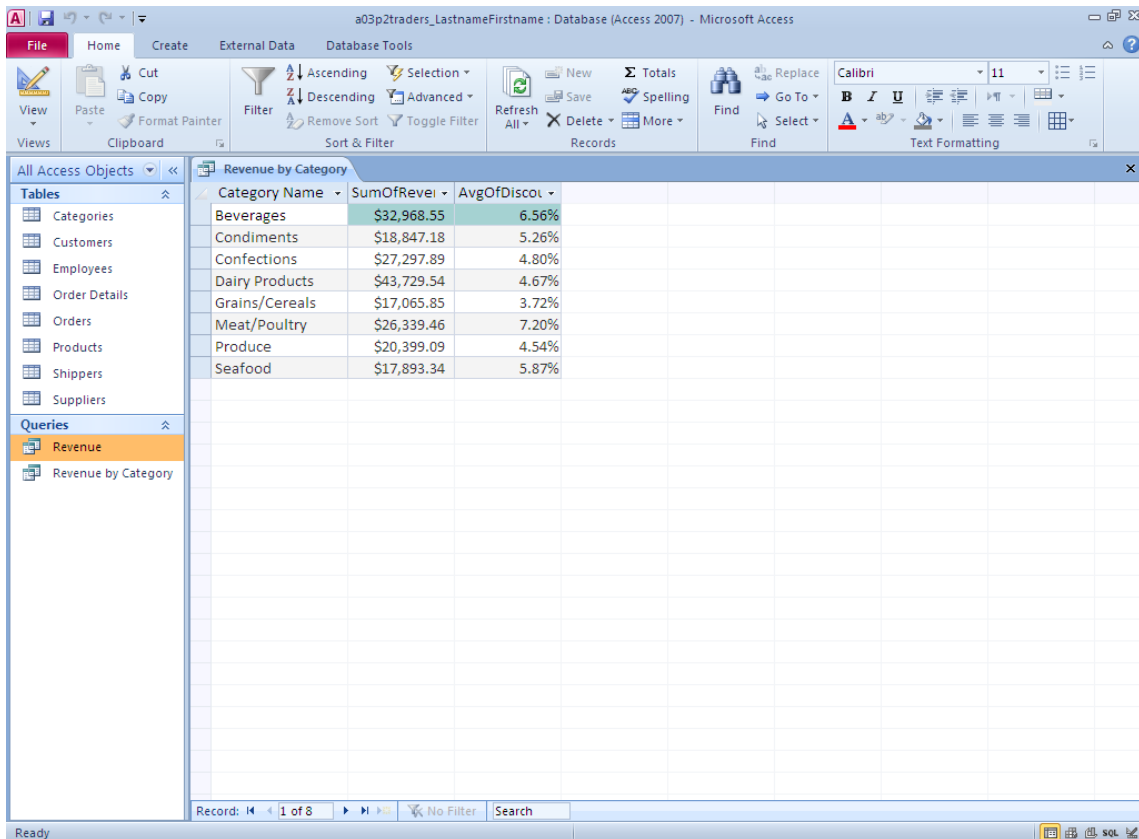
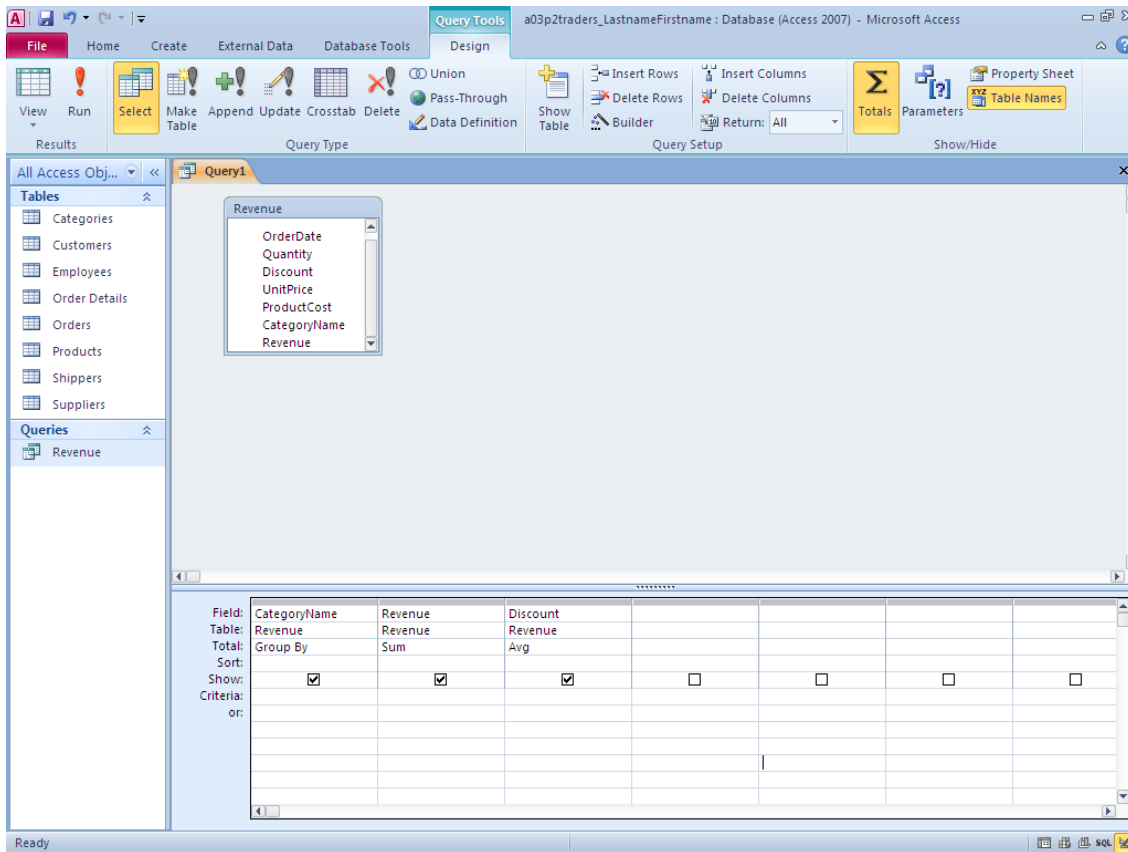
Table: Orders Order Details Order Details Products Products Categories

Show:

Criteria: >=#1/1/2012# And <

Order Date	Quantity	Discount	Unit Price	Product Cost	Category Name	Revenue
2/7/2012	10	0%	\$18.40	\$17.91	Seafood	\$184.00
2/21/2012	35	5%	\$14.00	\$13.51	Beverages	\$465.50
2/21/2012	30	5%	\$13.00	\$12.51	Condiments	\$370.50
2/6/2012	15	25%	\$21.00	\$16.00	Dairy Products	\$236.25
2/6/2012	18	0%	\$17.45	\$16.99	Confections	\$314.10
2/5/2012	15	15%	\$19.45	\$18.96	Condiments	\$247.99
2/5/2012	7	15%	\$13.00	\$12.51	Condiments	\$77.35
2/8/2012	60	5%	\$14.00	\$8.50	Confections	\$798.00
2/8/2012	20	5%	\$14.00	\$13.51	Grains/Cereals	\$266.00
2/7/2012	15	10%	\$21.05	\$20.56	Condiments	\$284.17
2/7/2012	10	10%	\$17.00	\$16.51	Condiments	\$153.00
2/7/2012	10	10%	\$36.00	\$35.51	Dairy Products	\$324.00
2/6/2012	30	0%	\$38.00	\$37.51	Grains/Cereals	\$1,140.00
2/8/2012	10	0%	\$9.00	\$2.75	Grains/Cereals	\$90.00
2/8/2012	20	0%	\$9.65	\$9.16	Seafood	\$193.00
2/8/2012	5	0%	\$13.00	\$12.51	Condiments	\$65.00
2/8/2012	14	0%	\$4.50	\$0.89	Beverages	\$63.00
2/8/2012	5	0%	\$18.40	\$17.91	Seafood	\$92.00
2/8/2012	30	0%	\$14.00	\$13.51	Grains/Cereals	\$420.00
2/13/2012	20	0%	\$45.60	\$32.50	Produce	\$912.00
2/13/2012	25	0%	\$20.00	\$19.51	Confections	\$500.00
2/14/2012	12	5%	\$15.50	\$9.99	Condiments	\$176.70
2/14/2012	8	5%	\$45.60	\$32.50	Produce	\$346.56
2/13/2012	20	0%	\$7.45	\$6.96	Meat/Poultry	\$149.00
2/25/2012	21	0%	\$9.50	\$9.01	Seafood	\$199.50
2/25/2012	6	0%	\$32.80	\$32.31	Meat/Poultry	\$196.80
2/25/2012	30	0%	\$14.00	\$13.51	Beverages	\$420.00





Microsoft Access window: a03p2traders_LastnameFirstname : Database (Access 2007) - Microsoft Access

Database Tools ribbon: Filter, Sort & Filter, Refresh All, Records, Find, Text Formatting

Navigation pane: All Access Objects >> Revenue by Category

Category Name	Total Revenue	Average Discount
Beverages	\$32,968.55	6.56%
Condiments	\$18,847.18	5.26%
Confections	\$27,297.89	4.80%
Dairy Products	\$43,729.54	4.67%
Grains/Cereals	\$17,065.85	3.72%
Meat/Poultry	\$26,339.46	7.20%
Produce	\$20,399.09	4.54%
Seafood	\$17,893.34	5.87%

Status bar: Record: 1 of 8, No Filter, Search

Microsoft Access window: Microsoft Access

Database Tools ribbon: Filter, Sort & Filter, Refresh All, Records, Find, Text Formatting

Save As dialog box:

Save in: Exp_Access_03_sol

- a03c1food_LastnameFirstname
- a03h1property_LastnameFirstname
- a03h2property_LastnameFirstname
- a03h3property_LastnameFirstname
- a03m1bank_LastnameFirstname
- a03m2homes_LastnameFirstname
- a03p1insurance_LastnameFirstname
- a03p2traders_LastnameFirstname

File name: a03p2traders_LastnameFirstname_2010-05-15

Save as type: Microsoft Access 2007 Database

Buttons: Tools, Save, Cancel

Status bar: Ready