

Microsoft Access - a04h4coffee_lastnamefirstname1 : Database (Access 2007)

Table Tools: Fields, Table

Navigation Pane: Tables (Customers, Order Details, Orders, Products, Sales Reps), Queries (Revenue), Forms (Customer Information, Customers - Split View, Products, Products - Datasheet, Products - Multiple Items, Revenue), Reports (Products, Products Module, Products Solstice, Sales by City)

Table: Sales Reps

Sales Rep ID	Last Name	First Name	Address	City	State	Zip Code	Home Phone
S0001	Haley	Dana	Arch Rd	Norristown	PA	19401-	(610) 261-1111
S0002	Your Name	Your Name	10000 Sample Road	City	PA	19401-	(610) 261-1111
S0003	Hepp	Ellen	Main St	Upper Dublin	PA	19034-	(610) 261-1111
(New)							

Record: 2 of 3

Microsoft Access - a04h4coffee_lastnamefirstname1 : Database (Access 2007)

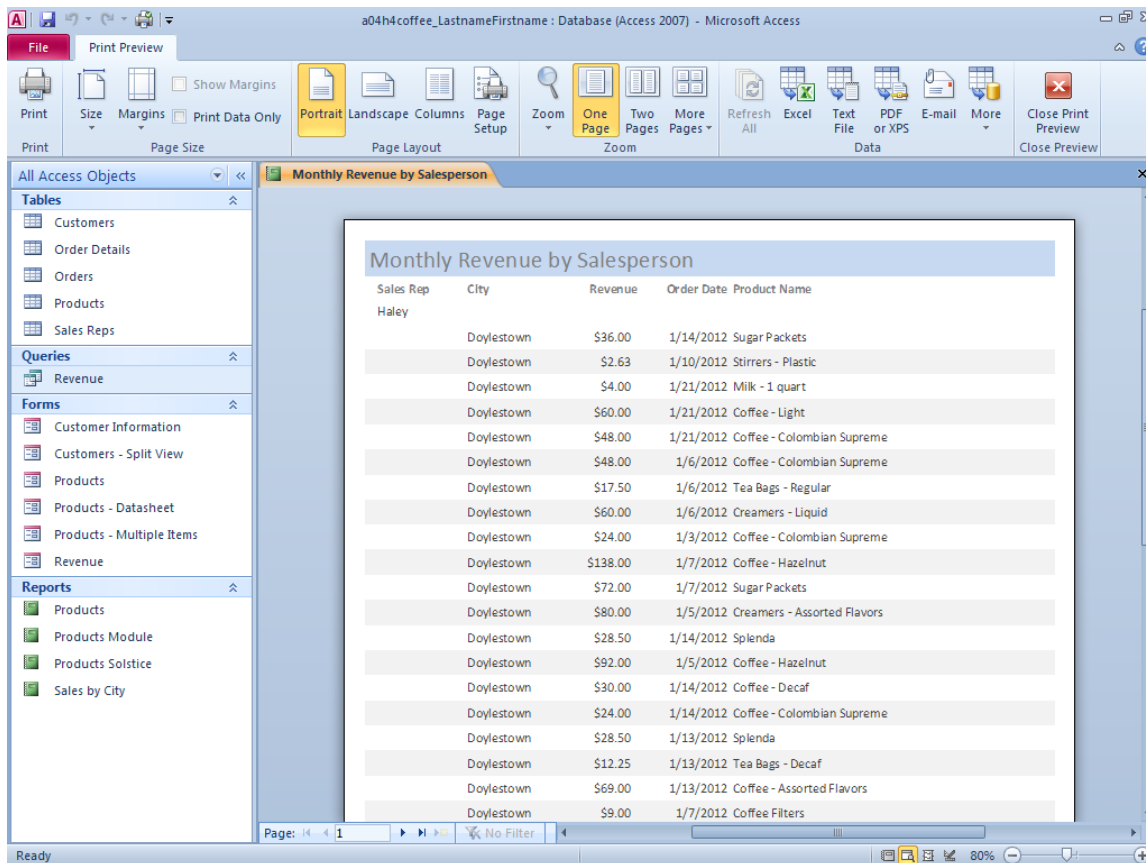
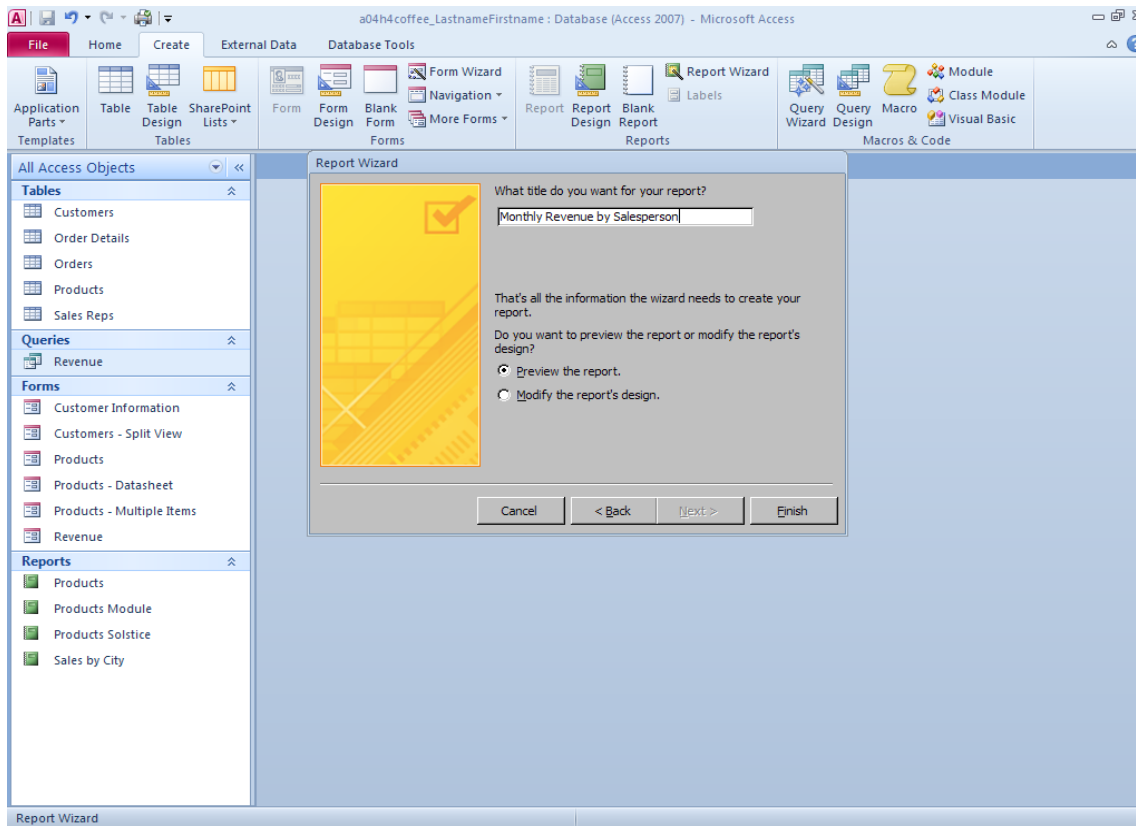
Table Tools: Fields, Table

Navigation Pane: Customers

Table: Customers

Address2	City	State	Zip Code	Phone	Fax	Service Start Date	Credit Rating	Sales Rep ID	Click to Add
Suite 2000	Doylestown	PA	18901-	(215) 375-6442	(215) 375-6443	1/3/2012	B	S001	
Suite 2202	Doylestown	PA	18901-	(215) 385-4431	(215) 385-4433	1/3/2012	B	S002	
Suite 302	Doylestown	PA	18901-	(215) 444-5555	(215) 444-5556	1/5/2011	B	S001	
Suite 302	Buckingham	PA	18912-	(215) 753-9887	(215) 753-9888	1/6/2011	A	S003	
Suite 302	Buckingham	PA	18912-	(215) 753-7830	(215) 753-7831	2/6/2012	C	S003	
Suite 302	Warrington	PA	18976-	(215) 446-8900	(215) 446-8901	2/10/2012	C	S001	
Suite 1403	Doylestown	PA	18901-	(215) 444-3980	(215) 444-3981	3/10/2012	A	S001	
Suite 1403	Doylestown	PA	18901-	(215) 635-3454	(215) 635-3455	4/11/2012	A	S002	
Suite 1403	New Britain	PA	18914-	(215) 666-4801	(215) 666-4802	5/13/2012	A	S002	
Suite 1403	Doylestown	PA	18901-	(215) 253-3908	(215) 253-3909	4/13/2012	B	S001	
Suite 1403	Doylestown	PA	18901-	(215) 974-1234	(215) 974-1235	8/14/2012	B	S002	
Suite 1403	Warrington	PA	18976-	(215) 327-4124	(215) 327-4125	10/21/2012	A	S002	
Suite 2202	Doylestown	PA	18901-	(215) 385-4431	(215) 385-4433	11/23/2012	B	S002	
Suite 2202	Buckingham	PA	18912-	(215) 123-9876		12/23/2012	A	S003	

Record: 1 of 14



Report Layout Tools: a04h4coffee_LastnameFirstname : Database (Access 2...)

Monthly Revenue by Salesperson

Warrington	\$19.00	1/25/2012	Popcorn - B
Warrington	\$60.00	1/25/2012	Creamers -
Warrington	\$30.00	1/25/2012	Coffee - Lig
Doylestown	\$28.50	1/5/2012	Splenda
Doylestown	\$48.00	1/24/2012	Soup - Vari
Doylestown	\$24.50	1/24/2012	Tea Bags - C
Doylestown	\$72.00	1/24/2012	Coffee - Co
Doylestown	\$30.00	1/24/2012	Coffee - De
Warrington	\$8.75	1/23/2012	Tea Bags - F
Warrington	\$40.00	1/23/2012	Napkins
Warrington	\$92.00	1/23/2012	Coffee - Ha
Warrington	\$28.50	1/23/2012	Heavy Paper
41 \$1,635.13			
Hepp			
Buckingham	\$38.00	1/26/2012	Popcorn - B
Buckingham	\$17.50	1/26/2012	Tea Bags - F

Group, Sort, and Total

Group on **LastName** with A on top

Property Sheet: AccessTotalsRevenue

Format	Data	Event	Other	All
Format	Currency			
Decimal Places	Auto			
Visible	Yes			
Width	0.875"			
Height	0.2188"			
Top	0.0229"			
Left	2.3021"			
Back Style	Normal			
Back Color	Background 1			
Border Style	Transparent			
Border Width	Hairline			
Border Color	Background 1, Dar			
Special Effect	Flat			
Scroll Bars	None			
Font Name	Calibri (Detail)			
Font Size	11			
Text Align	General			
Font Weight	Normal			
Font Underline	No			
Font Italic	No			
Fore Color	Text 1, Lighter 25%			
Line Spacing	0"			
Is Hyperlink	No			
Display As Hyperlink	If Hyperlink			
Hyperlink Target				
Gridline Style Top	Solid			
Gridline Style Bottom	Transparent			
Gridline Style Left	Transparent			
Gridline Style Right	Transparent			
Gridline Color	Background 1, Dar			
Gridline Width Top	1 pt			
Gridline Width Bottom	1 pt			
Gridline Width Left	1 pt			
Gridline Width Right	1 pt			

Report Layout Tools: a04h4coffee_LastnameFirstname : Database (Access 2...)

Monthly Revenue by Salesperson

Doylestown	\$2.63	1/11/2012	Stirrers - Pl
Doylestown	\$17.50	1/11/2012	Tea Bags - F
Doylestown	\$30.00	1/11/2012	Coffee - Lig
Doylestown	\$60.00	1/11/2012	Creamers -
Doylestown	\$30.00	1/11/2012	Coffee - De
Warrington	\$28.50	1/21/2012	Heavy Paper
29 \$1,292.13			
86 \$3,435.63			

Sunday, June 20, 2010

Group, Sort, and Total

Group on **LastName** with A on top

Property Sheet: AccessTotalsRevenue1

Format	Data	Event	Other	All
Format	Currency			
Decimal Places	Auto			
Visible	Yes			
Width	0.875"			
Height	0.2188"			
Top	0.0229"			
Left	2.3021"			
Back Style	Normal			
Back Color	Background 1			
Border Style	Transparent			
Border Width	Hairline			
Border Color	Background 1, Dar			
Special Effect	Flat			
Scroll Bars	None			
Font Name	Calibri (Detail)			
Font Size	11			
Text Align	General			
Font Weight	Normal			
Font Underline	No			
Font Italic	No			
Fore Color	Text 1, Lighter 25%			
Line Spacing	0"			
Is Hyperlink	No			
Display As Hyperlink	If Hyperlink			
Hyperlink Target				
Gridline Style Top	Solid			
Gridline Style Bottom	Transparent			
Gridline Style Left	Transparent			
Gridline Style Right	Transparent			
Gridline Color	Background 1, Dar			
Gridline Width Top	2 pt			
Gridline Width Bottom	1 pt			
Gridline Width Left	1 pt			
Gridline Width Right	1 pt			

a04h4coffee_LastnameFirstname : Database (Access 2007) - Microsoft Access

File Home Create External Data Database Tools

View Paste Copy Format Painter Filter Ascending Selection Descending Advanced Refresh All New Save Spelling Delete More Find Replace Go To Select Text Formatting

All Access Objects Revenue

Tables: Customers, Order Details, Orders, Products, Sales Reps

Queries: Revenue

Forms: Customer Information, Customers - Split View, Products, Products - Datasheet, Products - Multiple Items, Revenue

Reports: Monthly Revenue by Salesperson, Products, Products Module, Products Solstice, Sales by City

Santiago Coffee Shop Monthly Revenue by Salesperson

Last Name	City	Revenue	Product Name
Haley	Doylestown	\$36.00	Sugar Packets
	Doylestown	\$2.63	Stirrers - Plastic minimum
	Doylestown	\$4.00	Milk - 1 quart minimum
	Doylestown	\$60.00	Coffee - Light
	Doylestown	\$48.00	Coffee - Colombian Supreme
	Doylestown	\$48.00	Coffee - Colombian Supreme
	Doylestown	\$17.50	Tea Bags - Regular
	Doylestown	\$60.00	Creamers - Liquid
	Doylestown	\$24.00	Coffee - Colombian Supreme
	Doylestown	\$138.00	Coffee - Hazelnut
	Doylestown	\$72.00	Sugar Packets
	Doylestown	\$80.00	Creamers - Assorted Flavors
	Doylestown	\$28.50	Splenda
	Doylestown	\$92.00	Coffee - Hazelnut
	Doylestown	\$30.00	Coffee - Decaf
	Doylestown	\$24.00	Coffee - Colombian Supreme

Report View

a04h4coffee_LastnameFirstname : Database (Access 2007) - Microsoft Access

File Home Create External Data Database Tools

View Paste Copy Format Painter Filter Ascending Selection Descending Advanced Refresh All New Save Spelling Delete More Find Replace Go To Select Text Formatting

All Access Objects Monthly Revenue by Salesperson

Tables: Customers, Order Details, Orders, Products, Sales Reps

Queries: Revenue

Forms: Customer Information, Customers - Split View, Products, Products - Datasheet, Products - Multiple Items, Revenue

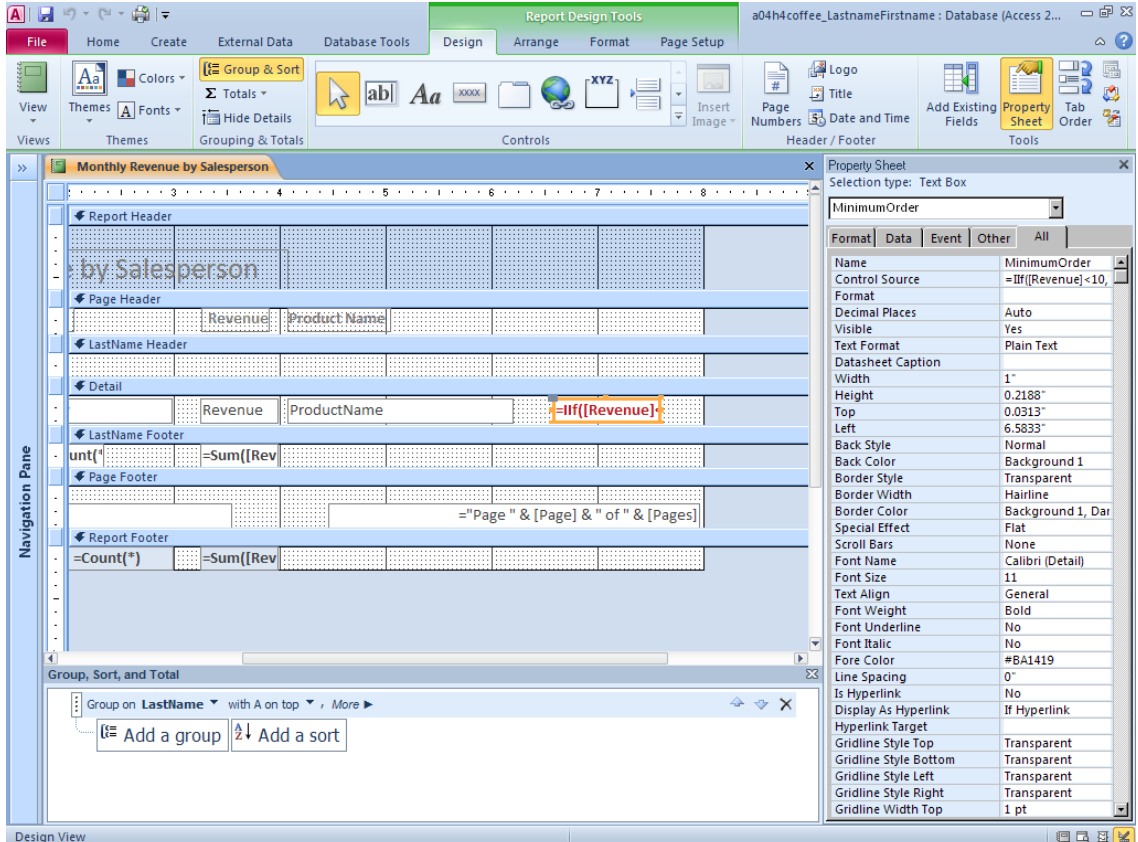
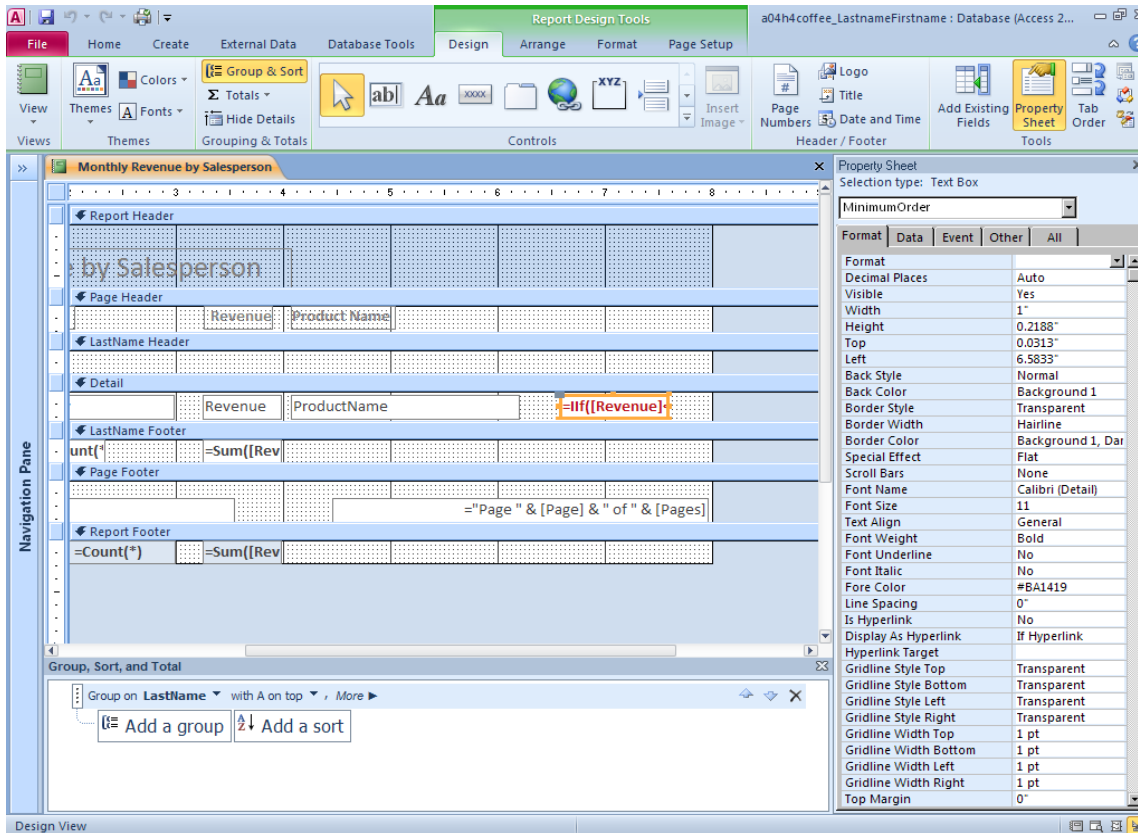
Reports: Monthly Revenue by Salesperson, Products, Products Module, Products Solstice, Sales by City

Monthly Revenue by Salesperson

Doylestown	\$40.00	1/14/2012	Soup - Chicken
Doylestown	\$40.00	1/14/2012	Napkins
Doylestown	\$92.00	1/16/2012	Coffee - Hazelnut
Doylestown	\$80.00	1/16/2012	Creamers - Assorted Flavors
Doylestown	\$40.00	1/16/2012	Napkins
Doylestown	\$48.00	1/16/2012	Coffee - Colombian Supreme
Warrington	\$28.50	1/21/2012	Styrofoam Cups - 12 ounce
Doylestown	\$36.00	1/22/2012	Sugar Packets
Doylestown	\$30.00	1/22/2012	Spoons
Doylestown	\$17.50	1/22/2012	Tea Bags - Regular
Doylestown	\$46.00	1/23/2012	Coffee - Hazelnut
Doylestown	\$30.00	1/23/2012	Coffee - Mild Blend
Doylestown	\$103.50	1/23/2012	Coffee - Assorted Flavors
Doylestown	\$24.00	1/23/2012	Coffee - Colombian Supreme
Doylestown	\$60.00	1/26/2012	Coffee - Mild Blend
Doylestown	\$30.00	1/26/2012	Creamers - Liquid
Doylestown	\$72.00	1/26/2012	Soup - Variety Pak
29	\$1,292.13		
86	\$3,435.63		

Monday, May 24, 2010

Report View



a04h4coffee_LastnameFirstname : Database (Access 2007) - Microsoft Access

File Print Preview

Print Size Margins Show Margins Print Data Only

Portrait Landscape Columns Page Setup Zoom One Page Two Pages More Pages Refresh All Excel Text File PDF or XPS E-mail More Close Print Preview Close Preview

Navigation Pane

Revenue

Santiago Coffee Shop
Monthly Revenue by Salesperson

Last Name	City	Revenue	Product Name
Hailey	Doylstown	\$36.00	Sugar Packets
	Doylstown	\$2.63	Blimers - Plastic
	Doylstown	\$4.00	Milk - 1 quart
	Doylstown	\$60.00	Coffee - Light
	Doylstown	\$48.00	Coffee - Colombian Supreme
	Doylstown	\$48.00	Coffee - Colombian Supreme
	Doylstown	\$17.50	Tea Bags - Regular
	Doylstown	\$60.00	Creamers - Liquid
	Doylstown	\$24.00	Coffee - Colombian Supreme
	Doylstown	\$138.00	Coffee - Hazelnut
	Doylstown	\$72.00	Sugar Packets
	Doylstown	\$80.00	Creamers - Assorted Flavors
	Doylstown	\$28.50	Spreads
	Doylstown	\$92.00	Coffee - Hazelnut
	Doylstown	\$30.00	Coffee - Decaf
	Doylstown	\$24.00	Coffee - Colombian Supreme
	Doylstown	\$28.50	Spreads
	Doylstown	\$12.25	Tea Bags - Decaf
	Doylstown	\$69.00	Coffee - Assorted Flavors
	Doylstown	\$9.00	Coffee Filters
	Warrington	\$46.00	Coffee - Hazelnut
	Warrington	\$30.00	Coffee - Light
	Doylstown	\$9.00	Coffee Filters
	Doylstown	\$40.00	Napkins
	Doylstown	\$34.00	Popcorn - Low Calorie
	Doylstown	\$40.00	Soup - Chicken
	Doylstown	\$17.50	Tea Bags - Regular
	Doylstown	\$24.00	Soup - Variety Pack
	Doylstown	\$30.00	Coffee - Decaf
	Warrington	\$19.00	Popcorn - Buttered
	Warrington	\$60.00	Creamers - Liquid
	Warrington	\$30.00	Coffee - Light

Sunday, June 20, 2010 Page 1 of 3

Page: 1 of 1 No Filter

Ready 52%

a04h4coffee_LastnameFirstname : Database (Access 2007) - Microsoft Access

Preview

Information about a04h4coffee_LastnameFirstname
C:\Documents and Settings\Toughbook\Desktop\Exploring Work\Access\access_chapter_...

Share your database in a Web browser
You can publish your Access application to a server, so that others can use your application from any standards-compliant Web browser.
[View and edit database properties](#)

Define Relationships
Define how the data in tables are related, such as ID fields or name fields in different tables that should match.

Compact & Repair
Help prevent and correct database file problems by using Compact and Repair.

Analyze Database
View object dependencies and analyze performance and design of this database.

Encrypt with Password
Use a password to restrict access to your database. Files that use the 2007 Microsoft Access file format or later are encrypted.